

# Gaspésie ✨ Baie des Chaleurs

Where the mountains of the North shore bow out those on the South shore step in.

With its steep cliffs and the Appalaches mountains, the Péninsule de la Gaspésie forms a barrier, causing the winds to shift and accelerate. This phenomenon is particularly marked in late summer, when the Northwesterly wind blows more frequently and more strongly.

All along the St Lawrence, the deep valleys of the Péninsule de la Gaspésie form corridors for the wind to rush into and strengthen and, when it is from the South, to gust out over the river.


At sea, the Gaspé Current follows the coast up to 20 nautical miles offshore. Close to shore, it can reach 2 knots. When the wind is against the current, it produces waves that tumble and may even break.

Then there is the Baie de Gaspé which channels the Northwesterly and Southeasterly winds. Mariners have to take care.

Offshore, 2 banks, the Banc des Américains and the Banc de l'Orphelin, are known for their choppy seas.

## Baie des Chaleurs

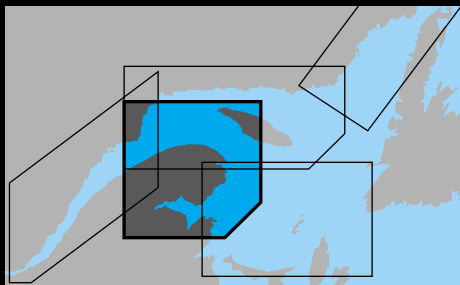
The entrance to Baie des Chaleurs is guarded to the North by the Haut-fond Leander and, to the South, by the Miscou shoals.

Its configuration tends to channel the wind for 2 reasons: the steep cliffs on its North side, and its  shape.

This means that in the middle of this section, off Nepisiguit Bay, there is a zone that is particularly windy and subject to high seas if the wind is from the Northwest or the Northeast.

Tidal currents in this section rarely reach one knot, except at the mouths of some rivers and some channels ✨

# Gaspésie 🗺️ Baie des Chaleurs



# Gaspésie Baie des Chaleurs

Charts  
1236 and 4026



## 109. Matane to Cap-des-Rosiers

### Winds Easterly

High waves against the Gaspé Current.



## 110. Les Méchins to Grande-Vallée

### Winds violent out of South, from fall to spring

Strongly breaking seas and turbulence close to shore.

Wind off Appalaches may occasionally reach storm force.



## 111. Les Méchins to Rivière-la-Madeleine

### Winds Northwesterly

Cross seas all along shoreline.  
Created by wind shifting to Westerly along coast and accelerated by barrier effect.

**Difficult conditions.**



## 112. Mont-Louis - L'Anse-Pleureuse - Rivière-la-Madeleine - Grande-Vallée

### Winds Southerly

Steep valleys. Channelling effect.  
Watch for katabatic wind. Gusts may exceed 40 knots; problems with anchoring at night.

**Dangerous river mouths.**

## 113. Petite-Vallée to Cap Gaspé

### Winds gale force out of North, Northeast or Northwest

Heavy to very heavy seas close to shore.

### Winds Northwesterly

Wind accelerated by convergence effect.

**Sea bottom rises rapidly.**

## 114. Rivière-au-Renard

### Winds Northerly, Northeasterly or Northwesterly

Breaking waves up to harbour entrance.

**Difficult.**

### Winds Northeasterly

Risk of surging sea in harbour. May cause moorage problems.

## 115. Cap Gaspé

### Winds Westerly or Northwesterly

Cross seas offshore. Refraction on both sides of the Presqu'île de Forillon.

### Winds Southerly

Waves breaking on shoals Northwest of cape. Refraction.  
Chop Southeast of cape at certain times during the tide cycle. Shallow.



Chart 4024

# Gaspésie 🗼 Baie des Chaleurs



# Gaspésie Baie des Chaleurs

Chart 4024



## 116. Baie de Gaspé

### Winds Westerly or Northwesterly

Strong wind from mountains. Acceleration not very noticeable on Gaspé side, but marked on Forillon side. Channelling effect.



### Winds Southeasterly

Channelling effect in bay.  
*Sea breeze, easily reaching 20 knots.*



### Winds gale force out of East or Southeast

Very strong swell.

***NB: Gaspé weather is reported from the airport and may not correspond to conditions in the bay.***



## 117. Douglstown

### Winds Southeasterly

Strong swell.



## 118. Banc des Américains

### Winds gale force from any direction, except West or Northwest

High, breaking waves.



## 119. Baie de Malbaie

### Winds gale force out of Southeast

Heavy seas often preceded by fog.

## 120. Île Bonaventure

### Winds Southerly or Northeasterly

Strong swell between the island and the shore. Shoals and channelling effect.

### ***Navigation difficult.***

### Winds gale force out of East

Cross seas up to 10 nautical miles offshore, created by reflection.



## 121. Banc de l'Orphelin

### Winds gale force from any direction

High, breaking waves.

## 122. Haut-fond Leander

### Winds Easterly or Southeasterly

High, breaking waves. Cap d'Espoir extends underwater.

### ***Very difficult zone.***

*One of the most difficult areas in Baie des Chaleurs.*



Chart 4486

# Gaspésie † Baie des Chaleurs



# Gaspésie Baie des Chaleurs

Chart 4486



## 123. Cap d'Espoir to Pointe Bonaventure

### **Winds Easterly or Northeasterly**

Large seas close to shore.  
Convergence effect.



## 124. Pointe au Maquereau

### **Winds Easterly or Northeasterly**

Convergence effect accentuated by corner effect.



## 125. Northwest Miscou Point to Maisonnette Point

### **Winds Westerly, Northwesterly, Northerly or Northeasterly**

High waves and shoals.

***Difficult access to all bays.***



## 126. Miscou Island (Northwest side)

### **Winds Northwesterly**

Cross seas accentuated by Miscou and Shippegan shoals. Wind shifting to Southwesterly, along shore.



## 127. Port-Daniel

### **Winds Easterly**

Strong swell.



## 128. Baie de Paspébiac

### **Winds Southwesterly**

Strong swell.

## 129. Bathurst

### **Winds Northerly, Northwesterly or Northeasterly**

High waves at harbour entrance.  
Shoals and funnelling effect.

### ***Dangerous.***

Tidal currents make access difficult.  
Without appropriate information, avoid this area, except in fair weather.



## 130. Petite rivière Cascapédia and Rivière Cascapédia

### **Winds Northerly or Northwesterly**

Very strong wind from valleys. Channelling effect.



## 131. Heron Channel

### **Winds Westerly or Easterly**

High waves over shoals. Funnelling effect between Heron Island and New Brunswick coast.



## 132. Rivière Nouvelle (baie Tracadigache)

### **Winds Northerly or Northwesterly**

Very strong wind from valley.  
Channelling effect.



## 133. Eel Bay

### **Winds Easterly at ebb tide**

High waves. Shoals and river current.  
Funnelling effect from Baie des Chaleurs.



# Gaspésie 🗺️ Baie des Chaleurs

