

Pointe-des-Monts ✨ Cap Whittle

This is the gateway to that veritable inland sea known as the Gulf of St Lawrence. It is also the door through which the Easterly wind surges into the estuary, forced into the funnel formed by the North and South shores.

Northeast of Pointe-des-Monts, the sharp relief of the Archipel des Sept Îles creates gusty winds.

In the Archipel de Mingan, the combination of uneven seabed and strong tidal currents sometimes makes navigation dangerous, as is often the case among the islands on the mid and lower Côte-Nord.

As one moves East, however, the tide becomes weaker. Mariners will find that the strength of the tidal currents does not necessarily correspond to the height of the tides.

The Easterly wind is particularly strong in the Détroit de Jacques-Cartier, where Anticosti and the North shore form a huge funnel. This wind produces an impressive swell on the Bancs de Mingan.

Along the Basse-Côte-Nord - the lower North shore - only from Baie Johan-Beetz to Kegaska will mariners find a smooth shoreline and deep water.

Be careful near the river mouths on the North shore. At ebb tide, the strong currents from these rivers create very difficult, if not dangerous, seas.

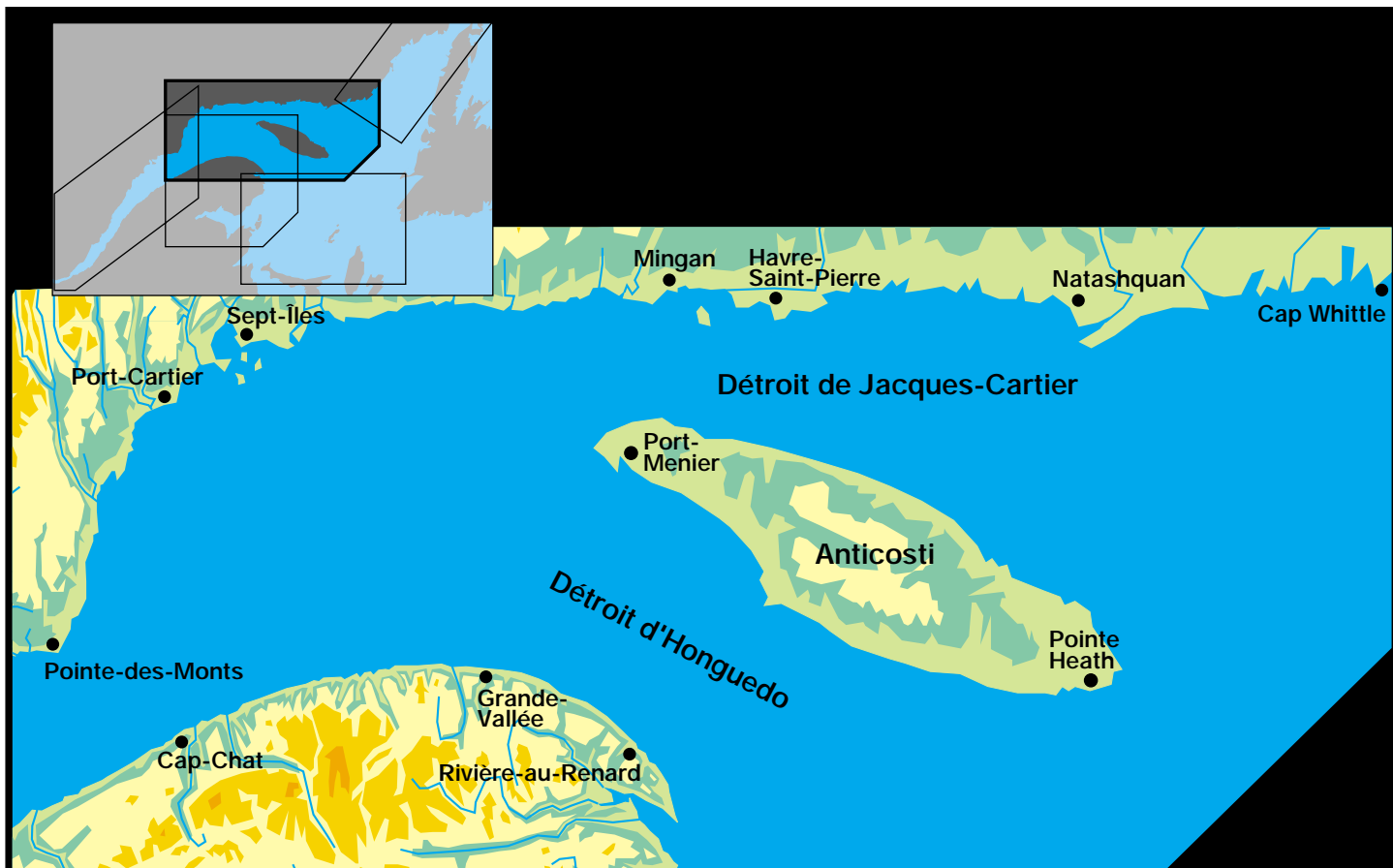
Anticosti

The great island of Anticosti has 2 faces. On the North, it has steep cliffs and numerous capes, near which mariners will encounter cross seas. The water is quite deep.

On the South, the land slopes gently away to the sea. But don't be deceived by appearances. Its shoals and reefs are the graveyard of over 400 ships. *Watch out for gusts of wind.*

There is frequent fog in the Pointe-des-Monts and Havre-Saint-Pierre areas as a result of cold water rising from the river bottom ✨

Pointe-des-Monts 🗨️ Cap Whittle



Pointe-des-Monts Cap Whittle

Chart 4026



39. Pointe-des-Monts

Winds Easterly

Cross seas. Wind deviates and accelerates as a result of barrier and corner effects. Conditions may become very difficult.

Dangerous seas within 3 or 4 nautical miles of the point.



Winds gale force from the Southwest

High, short, sharply breaking waves. Southeast of the point, bottom rises from 180 to 40 fathoms. Frequent fog caused by cold water rising to the surface.



40. Pointe-des-Monts to Pointe aux Jambons

Winds gale force from the East

High waves 3 to 5 nautical miles offshore. Bottom rises rapidly.



41. Île aux Oeufs

Winds Easterly or Northeasterly at ebb tide

Breaking waves.

Avoid passing between the island and the shore.



42. Île du Grand Caouis

Winds Easterly or Northeasterly at ebb tide

Breaking waves.

Avoid passing between the island and the shore.

43. Port-Cartier

Winds Easterly or Southeasterly

High waves near the Cascades (Rayonnier) wharf. Convergence or barrier effects.



44. Pointe aux Jambons

Winds Easterly

High waves. Underwater cliff. Corner effect near the point, which accentuates the phenomenon.

Stay several nautical miles off the point.



45. Rivière Sainte-Marguerite

Winds Southeasterly

Cross seas and breaking waves against the currents and over sandy shoals. Accentuated by acceleration of the wind along the Northeast side of the bay. Corner effect.



Winds Northerly or Northwesterly

Short, steep waves that break easily at rising tide. Wind accelerates. Channelling effect.

Dangerous conditions at the mouth of the river.



Pointe-des-Monts ✦ Cap Whittle



Pointe-des-Monts Cap Whittle

Charts
1220 and 4026



46. Chenal de l'Ouest

Winds Southwesterly or Southerly

High waves. Amplified by the funnelling effect created by the Îlets Dequen and Pointe à la Chasse.



47. Pointe à la Chasse

Winds Southerly or Southwesterly

Strong swell between the point and Île du Corossol.



Winds Southeasterly

Wind accelerates along the West side of the point, toward Rivière Sainte-Marguerite.



48. Baie des Sept Îles

Winds Southerly or Southwesterly

Impressive swell flowing into the Chenal du Millieu and high, steep waves up to 2 nautical miles offshore from the Iron Ore wharfs. Reflection effect. When there is a Southerly swell: surf, even when winds light.



49. Île du Corossol

Winds Easterly

Confused seas and wind accelerates around Southern tip. Corner effect.

50. Ile La Petite Boule

Winds Easterly

Strong swell on Eastern side.



51. Ile La Grosse Boule

Winds Easterly

Confused seas and strong swell. Wind accelerates around Southern tip. Corner effect.



52. Sept-Îles to Rivière-Saint-Jean

Winds gale force out of the South, Southwest or Southeast

Strong swell. Produced by shallow and irregular seabed along the shore, up to 20 nautical miles offshore.



Chart 4026

53. Rivière Moisie

Winds Southerly, Southwesterly and particularly Southeasterly

High, very short waves breaking at the mouth of the river, caused by the river current.



Very dangerous. Risk of capsizing.

Particularly at ebb tide.

Stay several nautical miles offshore in these conditions. Enter the river only at high tide.

Pointe-des-Monts 🗨️ Cap Whittle



Pointe-des-Monts Cap Whittle

Chart 4026



54. Banc Blaskowit

Winds gale force out of the East

Strong refraction effect and breaking waves near the bank. Underwater point.



55. Rivière Sheldrake

Winds Southerly, Southeasterly or Southwesterly

High breaking waves forming a bar 20 metres or so off the shore. Wait for rising tide before entering the river.



56. Rivière-au-Tonnerre

Winds Southwesterly at ebb tide

High, breaking waves at the entrance to the harbour.

Hazardous.

Avoid Banc Rouge, 20 nautical miles to the East-Southeast. Breaking waves and shoals.



57. Banc Parent

Winds gale force out of the Southeast

Cross seas produced by channelling effect from East in Déroit de Jacques-Cartier and by shoals.

Dangerous conditions.



58. Pointe de l'Ouest

Winds gale force out of the Southeast

Heavy, cross seas offshore, produced by Easterly winds channelled to the North of Anticosti by Déroit de Jacques-Cartier.

59. Port-Menier

Winds Southerly and particularly Southeasterly

Strong, breaking waves. Sea bottom rises.

Very difficult access to wharf.



60. Rivière Jupiter

Winds Southerly, Southwesterly or Westerly

Breaking waves creating a bar. Numerous sand banks.

Dangerous river mouth.



61. Pointe Carleton

Winds Westerly

Cross seas up to a few nautical miles offshore.



62. Cap de la Table

Winds Westerly

Cross seas up to a few nautical miles offshore.



63. Pointe Heath

Winds Easterly

Swell accentuated offshore by submerged segment of point.



Winds Westerly

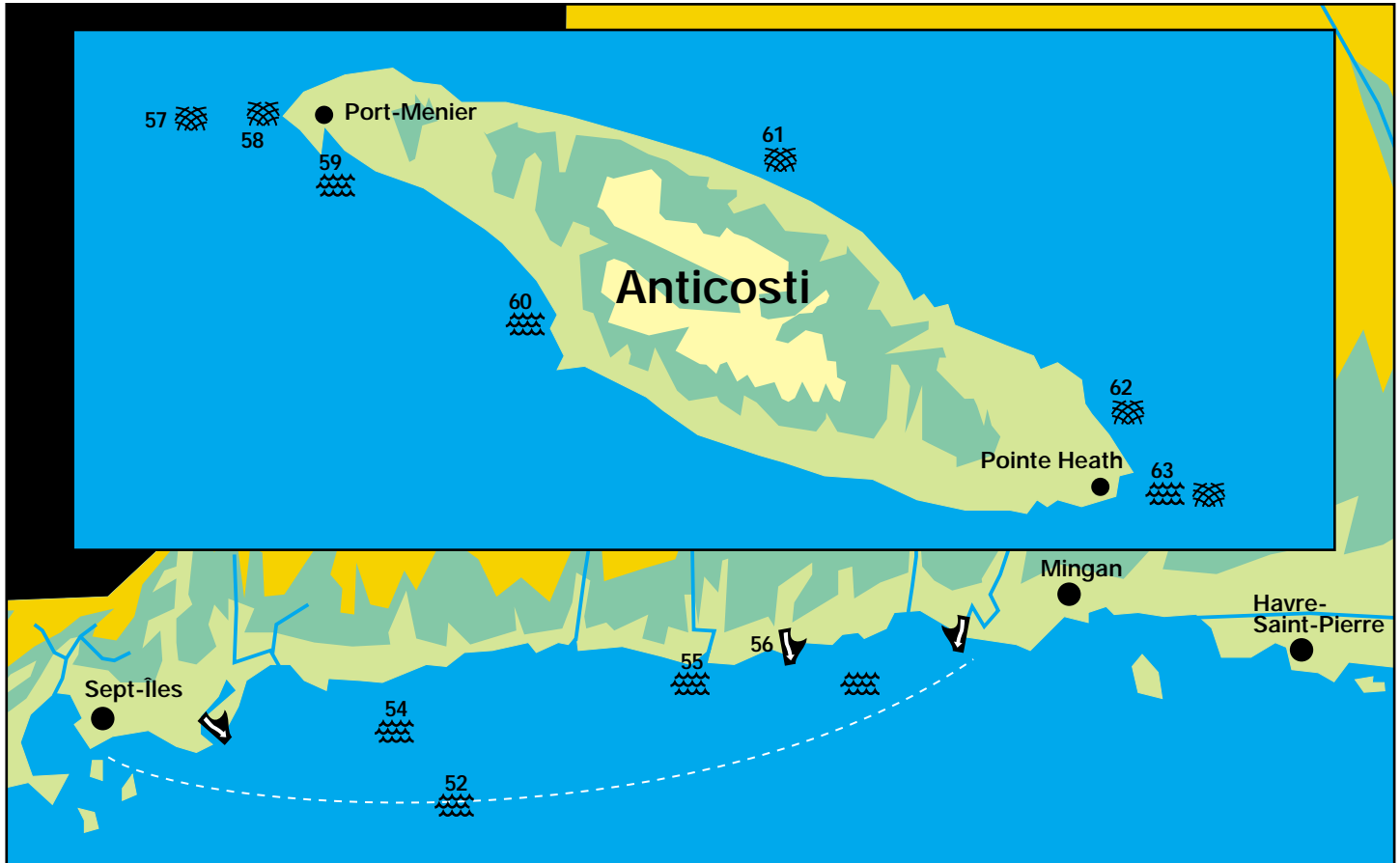
Heavy, cross seas offshore, created by refraction.

Difficult to very difficult conditions.



Charts
4025 and 4026

Pointe-des-Monts Cap Whittle



Pointe-des-Monts Cap Whittle

Chart 4026



64. Rivière Saint-Jean

Winds Westerly or Southwesterly at ebb tide

Breaking waves forming a bar.
Produced by sandy shoals.

Dangerous river mouth.

Chart 4432



65. Île aux Perroquets and Île Nue de Mingan

Winds Westerly or Southwesterly

Cross seas in the lee of the islands.
Produced by refraction.

Sometimes very difficult.



66. Banc de Mingan

**Winds Southerly, Southeasterly,
Southwesterly or Easterly**

Impressive swell produced by shoals.



67. La Longue Pointe to Île Nue de Mingan

Winds Westerly at rising tide

High, breaking waves in channel.



68. La Longue Pointe to Mingan

Winds Southerly

Strong, breaking waves close to shore.

Strongly advisable to avoid this area.

69. Île du Havre de Mingan

Winds Westerly or Southwesterly at rising tide

Heavy seas between the shore and the island,
at the Western entrance to the channel.
Funnelling effect and shoals.



70. Chenal de Mingan

Winds Westerly at rising tide

High, breaking waves. Particularly between
Île du Havre de Mingan and La Grande Île.



Winds Southerly or Southwesterly

Cross seas accentuated by tidal currents.



May become dangerous.

71. Île aux Bouleaux to Petite Île aux Bouleaux

Winds Westerly or Southwesterly

Heavy seas at Western entrance to islands,
particularly at rising tide. Funnelling effect
and shoals.



72. La Grande Île

**Winds Westerly, Southwesterly, Southerly,
Southeasterly or Easterly**

High waves South of the island. Shoals.



Navigation difficult.

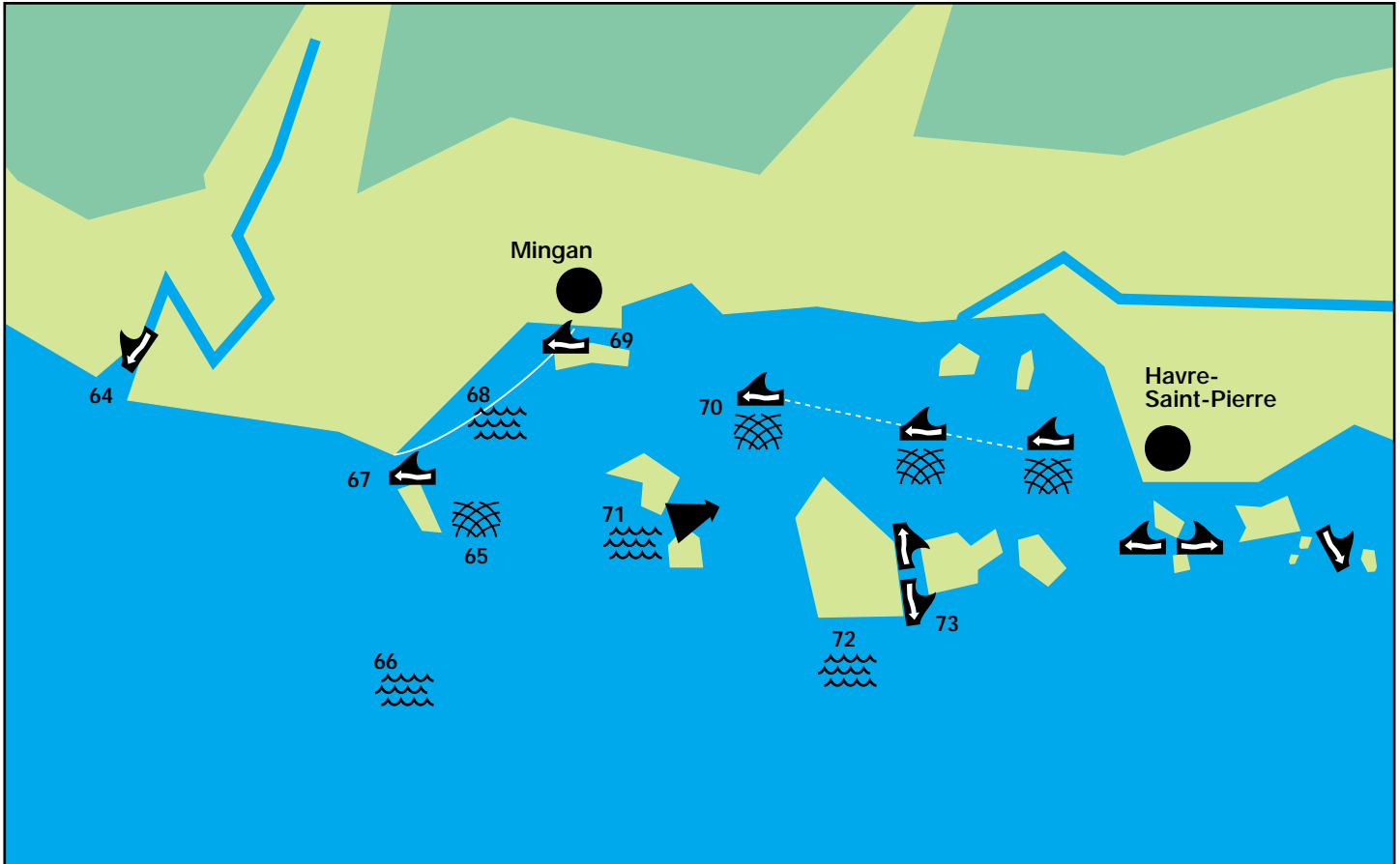
73. Chenal à la Proie - South entrance

Winds Northerly or Southerly, against current

Very confused seas.



Pointe-des-Monts ⚓ Cap Whittle



Pointe-des-Monts ☸ Cap Whittle

Chart 4432



74. Chenal du Fantôme

Winds against current
Very confused seas.



75. Chenal de la Petite Île au Marteau (Chenal Walrus)

Winds Southerly at ebb tide
Difficult.



76. Haut-fond à l'Eau Claire

**Winds Westerly, Easterly, Southwesterly,
Southerly or Southeasterly**
Strong swell and breaking waves.
Difficult area.



77. La Grande Pointe à l'Eau Claire

Winds Easterly
Cross seas.
Stay more than 3 nautical miles offshore.
Corner effect strengthens wind at the tip
and causes it to shift to Northeast.



78. Baie des Trilobites

Winds Southerly or Southwesterly
Strong swell at entrance to bay.



79. Île Saint-Charles

Winds Southerly or Southwesterly
Zone of standing waves extending several
nautical miles offshore.
Pronounced reflection effect West of island.

80. Île à la Chasse - Northwest tip

**Particularly when wind Southwesterly
against current**
Strongly breaking seas.
Exceptionally strong chop.



81. Rocher de la Garde

**Winds Easterly, Southeasterly, Southerly or
Southwesterly**
High, breaking waves.
Stay more than 3 nautical miles offshore.



82. Haut-fond Collins

**Winds gale force out of the East, Southwest,
South or Southeast**
High, breaking waves.
Stay more than 3 nautical miles offshore.



83. Chenal des Saints

Winds Southeasterly
Strong swell. Funnelling effect.



84. Île Sainte-Geneviève

Winds Easterly
High, breaking waves over La Cormoraille
Sainte-Geneviève (Rochers Les Saints) and
Rochers Bowen.



85. Pointe Nord-Est

Winds Easterly
Strong swell. Funnelling effect.



Pointe-des-Monts Cap Whittle



Pointe-des-Monts Cap Whittle

Chart 4456



86. Baie Johan-Beetz

Winds Southerly or Southwesterly

Strong swell. Funnelling effect.
Outflow from Rivière Plashti.

Difficult access to harbour.

Avoid at ebb tide. Strongly breaking seas.

Charts
4455 and 4454



87. Baie Johan-Beetz to Natashquan

Winds gale force out of South, Southeast or Southwest

High waves.

Stay more than 3 nautical miles offshore.

Chart 4454



88. Rivière Natashquan

Winds Westerly, Southwesterly or Southerly, at ebb tide

Dangerous. Strong river current.



Winds Southerly

Wharf exposed to swell.

Very difficult to come alongside.



89. Pointe de Natashquan

Winds Southerly, Southeasterly or Southwesterly

Difficult.



Winds Southwesterly

Shorter, breaking waves at rising tide.

More difficult.

Winds Southeasterly

Strong swell at ebb tide.



Winds gale force, offshore

High waves. Uneven sea bottom.

90. Haut-fond Court

Winds Southerly, Southeasterly or Southwesterly

Breaking seas.



91. Kegaska

Winds Southerly, Southeasterly or Easterly *Very difficult access.*



92. La Romaine

Winds Southerly, Southeasterly or Southwesterly

Waves flowing directly into harbour.

Very difficult. Manoeuvring dangerous. Not advisable not to attempt to come alongside.



93. La Romaine to Îles Sainte-Marie

Winds Southerly, Southeasterly, Southwesterly and particularly Easterly

Breaking seas up to 10 nautical miles offshore.



94. Rivière Olomane

Winds Southerly or Southwesterly

Breaking waves at river mouth.



95. Banc Beaugé

Winds gale force out of East, West or South Seas always stronger over bank.



Charts
4453 and 4440

Chart 4021

Pointe-des-Monts Cap Whittle

