

 Travellog



Biosphère
ÎLE HELENE
SAINTE
BioKit



Environnement Canada Environment Canada

Canada 

The combination to unlock the chest:



«0»

Point

C

D N

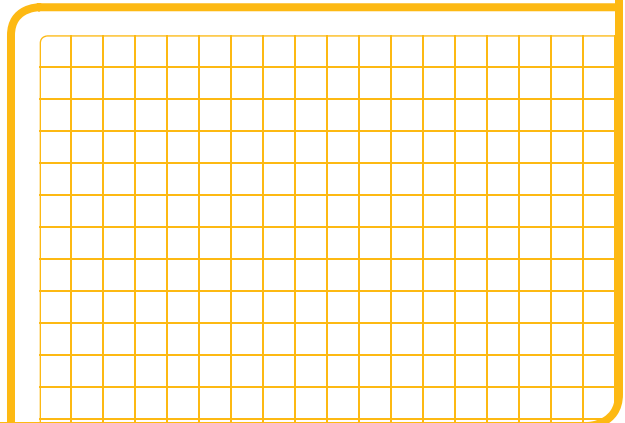
L H

Point A

Note the changes between Pehr Kalm's time and today.

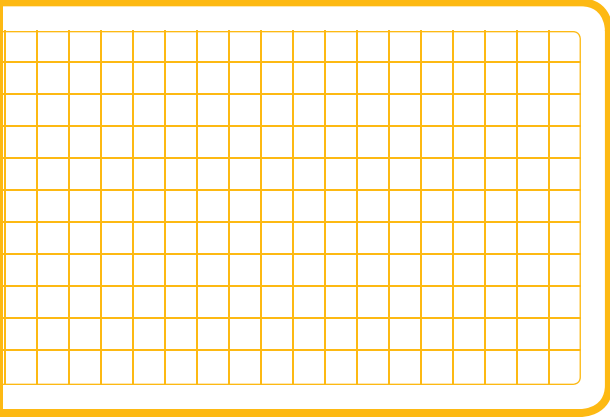
Point B

Use this space to draw the amphibians you saw near the pond or the discoveries you made there.



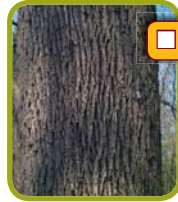
Point C

Use this space to sketch the fossils you found in the blocks on the wall.



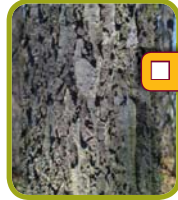
Point D

Use a checkmark to indicate which species you saw.



American white ash

Red-osier dogwood



Common hackberry

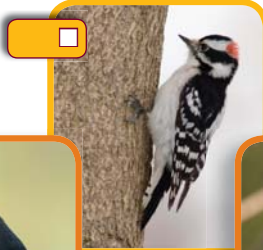
Point E

Use this space to note your bird observations.

Number of bird species heard: _____

Number of bird species seen: _____

Downy woodpecker



Black-capped chickadee



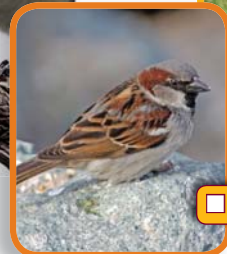
American robin



Red-winged blackbird



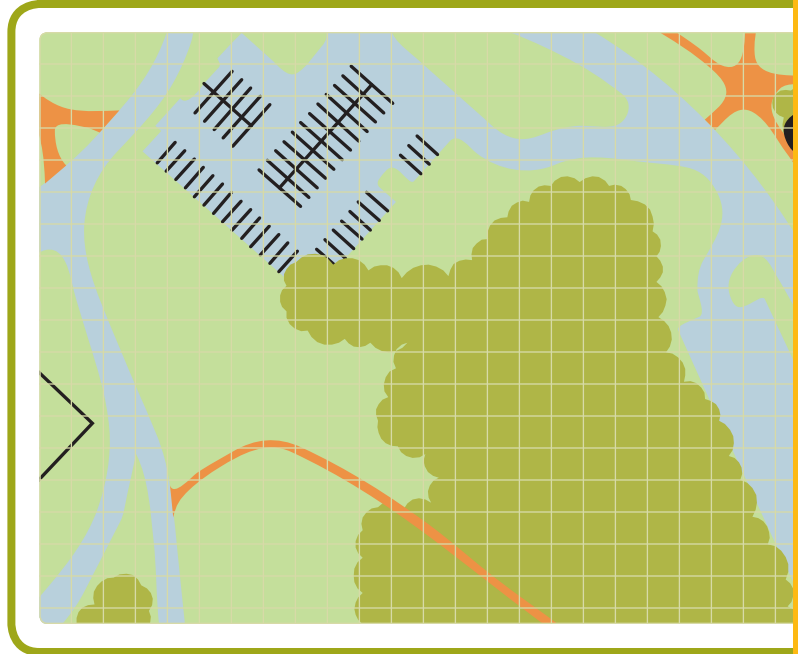
Northern cardinal



House sparrow

Point F

Mark the woodchuck burrows you found on the map to avoid falling in!



Point G

Note the different life forms you observed on the stumps.

Point H

What are the different means of transportation that can be used to access the island?

And how can plants and animals make their way to the island?

Point i

Which invasive species did you see?

European starling

Purple loosestrife

Eurasian watermilfoil
Photo: Dave Bonta, Flickr

Common reed

Japanese knotweed



Point J

Match the fish image to its name.

a Brown bullhead
b Yellow perch

c Lake sturgeon
d American eel

e Northern pike

1: _____

2: _____

3: _____

4: _____

5: _____



Answers: 1D, 2A, 3B, 4C, 5E

Point K

Found a treasure?

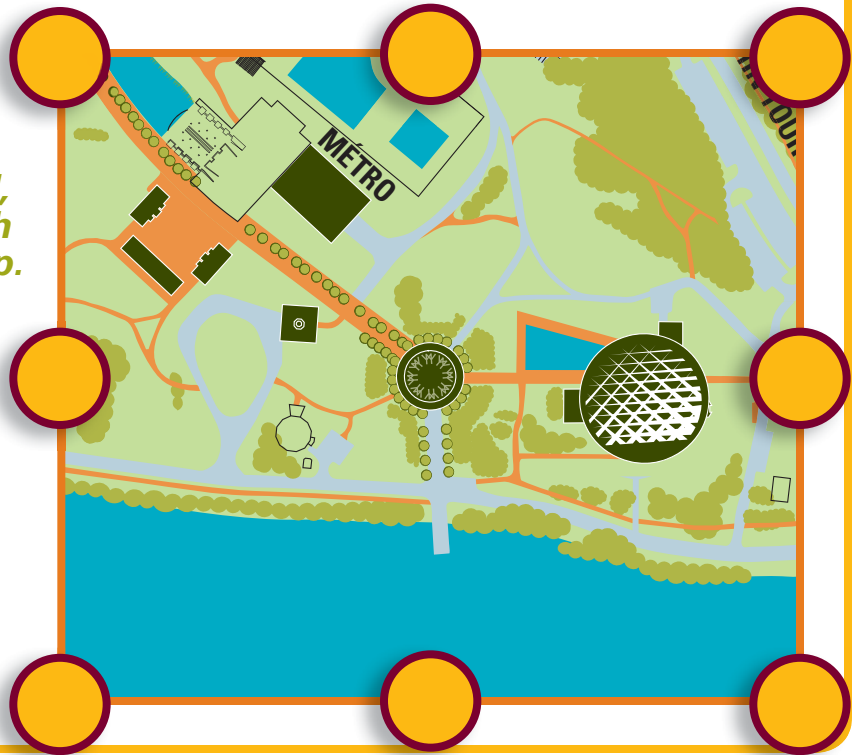
Which one?

Point L

*Do you think this area
is as welcoming as the
former wetland?*

Point M

*Based on the
information provided,
mark where the north
is located on this map.*



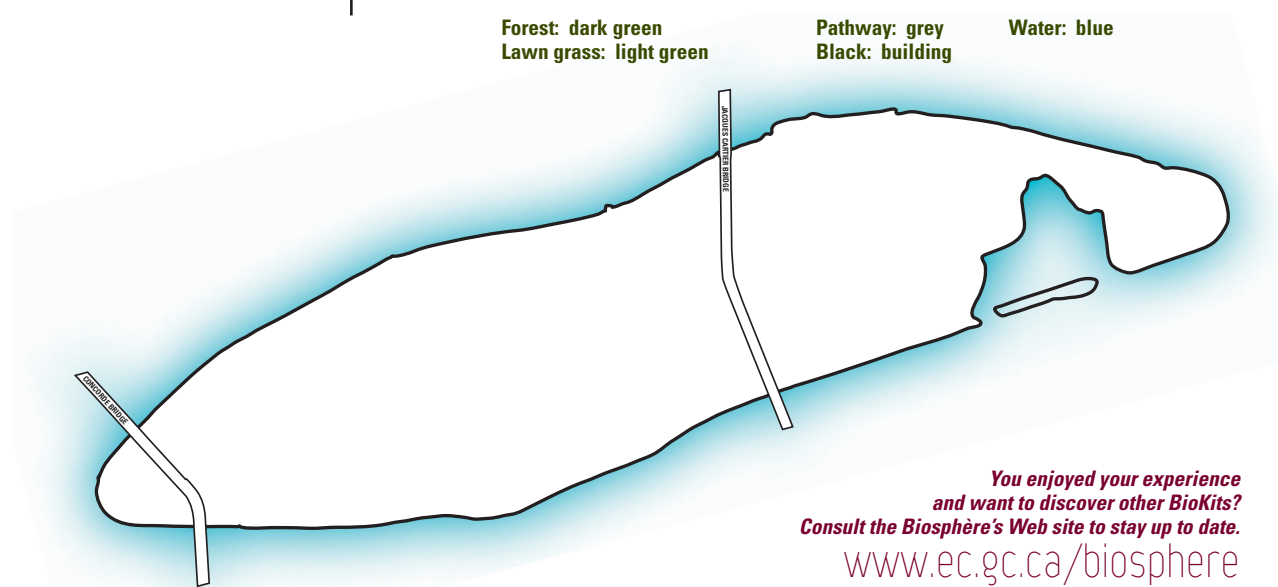
Final step

**Draw your ideal île Sainte-Hélène
using the colour codes below.**

Forest: dark green
Lawn grass: light green

Pathway: grey
Black: building

Water: blue



***You enjoyed your experience
and want to discover other BioKits?
Consult the Biosphère's Web site to stay up to date.***

www.ec.gc.ca/biosphere